

# D3



KYJOUSKÉ  
ZAHRADY

## NP 1

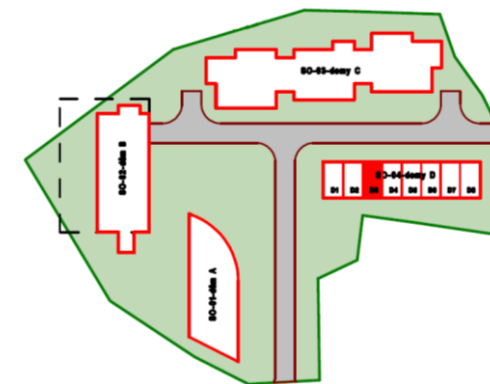
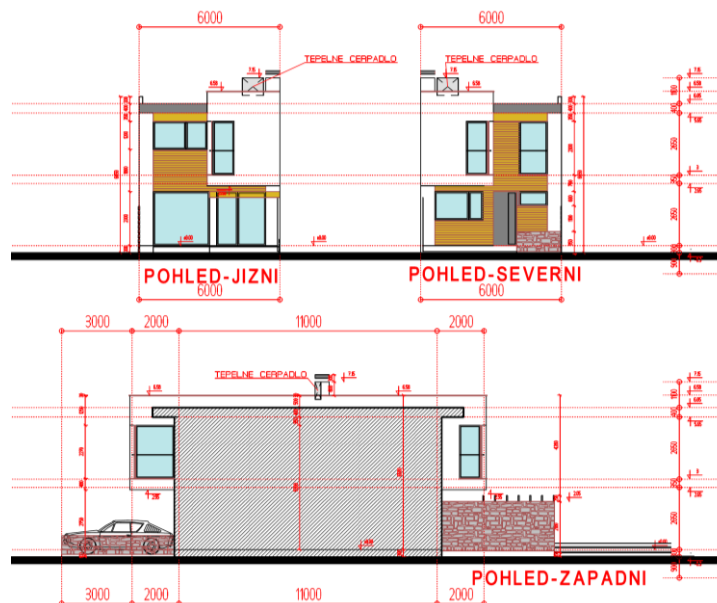
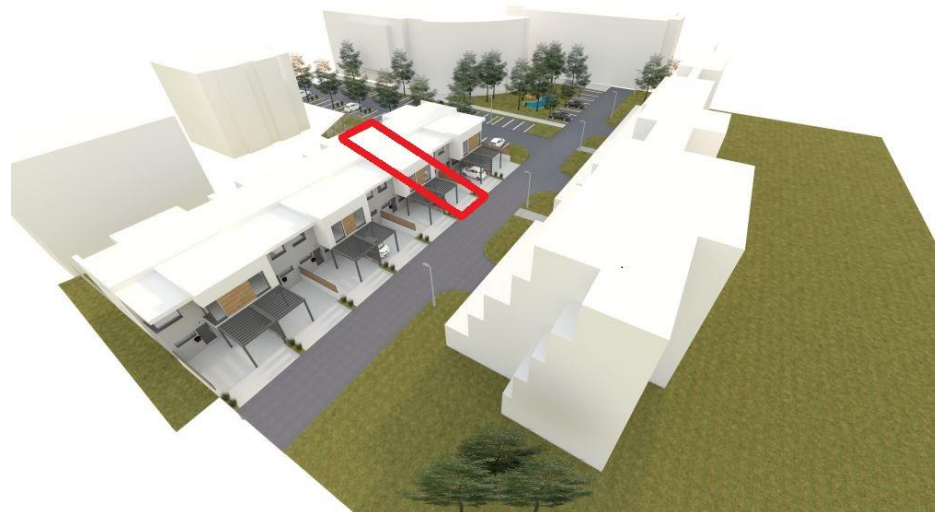
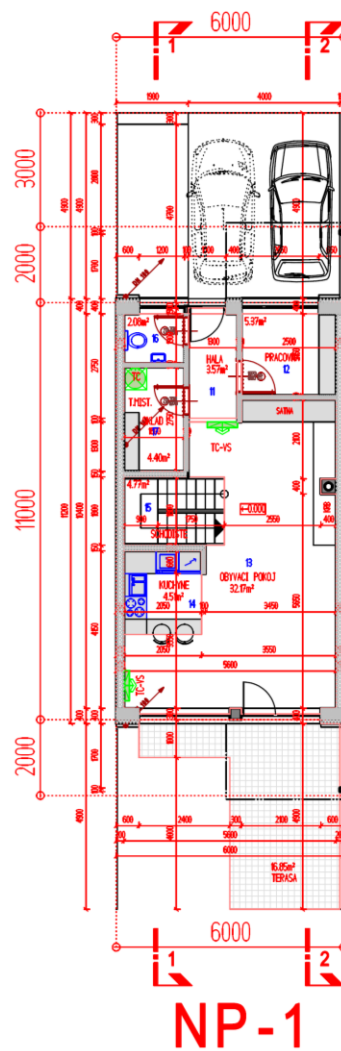
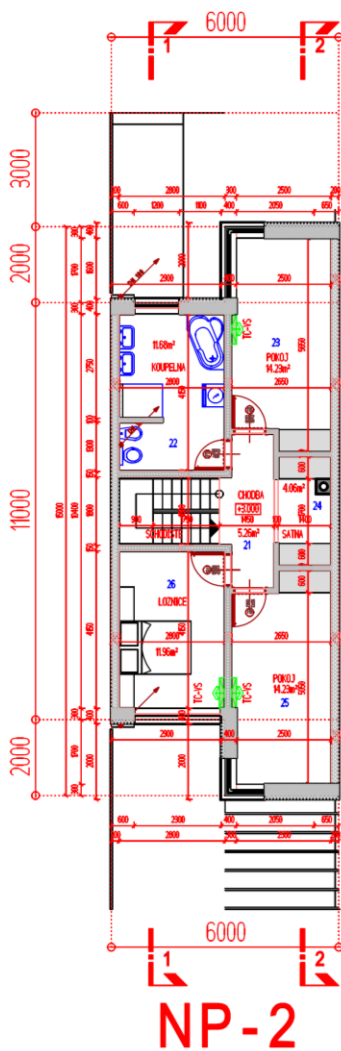
11 hala	3,57 m <sup>2</sup>
12 pracovna	5,37 m <sup>2</sup>
13 ob. pokoj	32,36 m <sup>2</sup>
14 kuchyně	4,62 m <sup>2</sup>
15 schodiště	4,77 m <sup>2</sup>
16 WC	2,14 m <sup>2</sup>
17 sklad	4,54 m <sup>2</sup>

## NP 2

21 chodba	5,26 m <sup>2</sup>
22 koupelna	12,27 m <sup>2</sup>
23 pokoj	14,23 m <sup>2</sup>
24 šatna	4,06 m <sup>2</sup>
25 pokoj	14,23 m <sup>2</sup>
26 ložnice	12,18 m <sup>2</sup>

Podlahová pl. 119,6 m<sup>2</sup>

Pozemek 130,83 m<sup>2</sup>



Realitní tým  
Ing. Michala  
Stehlíka