

D6



KYJOUSKÉ
ZAHRADY

NP 1

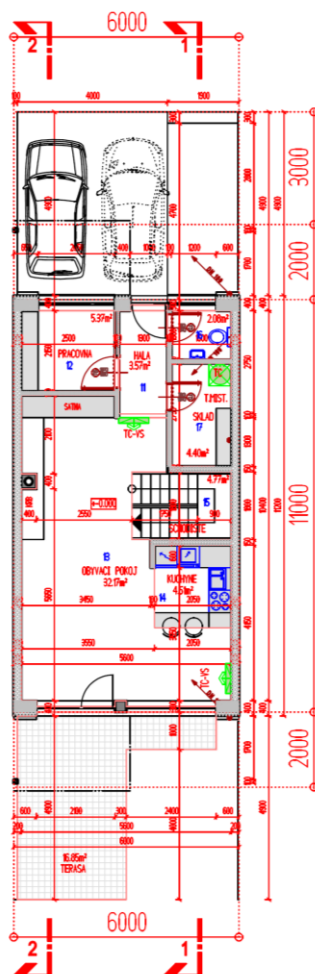
11 hala	3,57 m ²
12 pracovna	5,37 m ²
13 ob. pokoj	32,36 m ²
14 kuchyně	4,62 m ²
15 schodiště	4,77 m ²
16 WC	2,14 m ²
17 sklad	4,54 m ²

NP 2

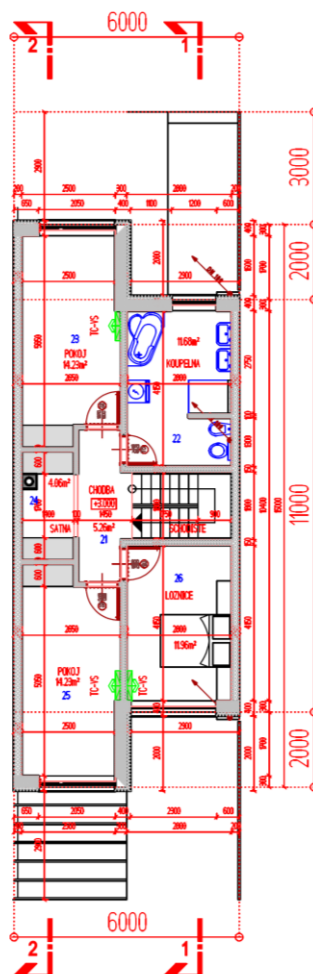
21 chodba	5,26 m ²
22 koupelna	12,27 m ²
23 pokoj	14,23 m ²
24 šatna	4,06 m ²
25 pokoj	14,23 m ²
26 ložnice	12,18 m ²

Podlahová pl. 119,6 m²

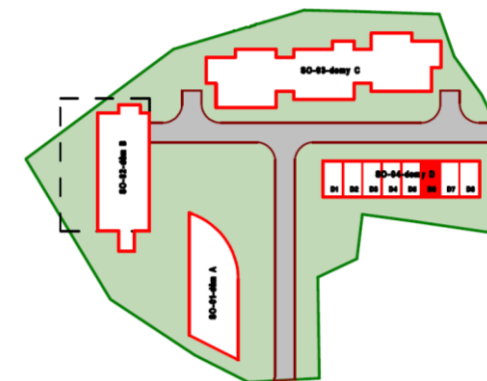
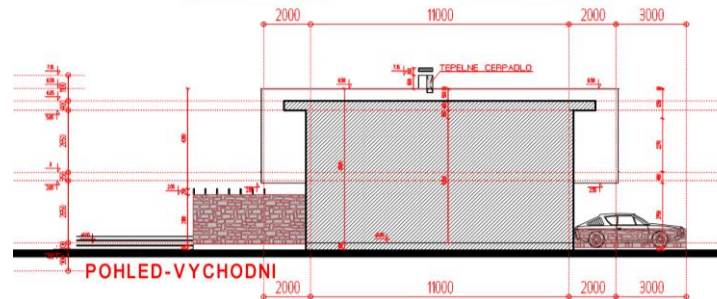
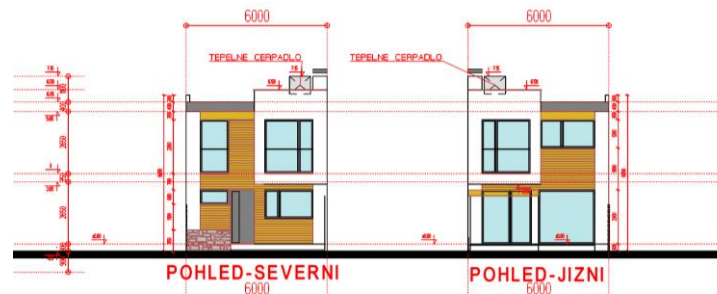
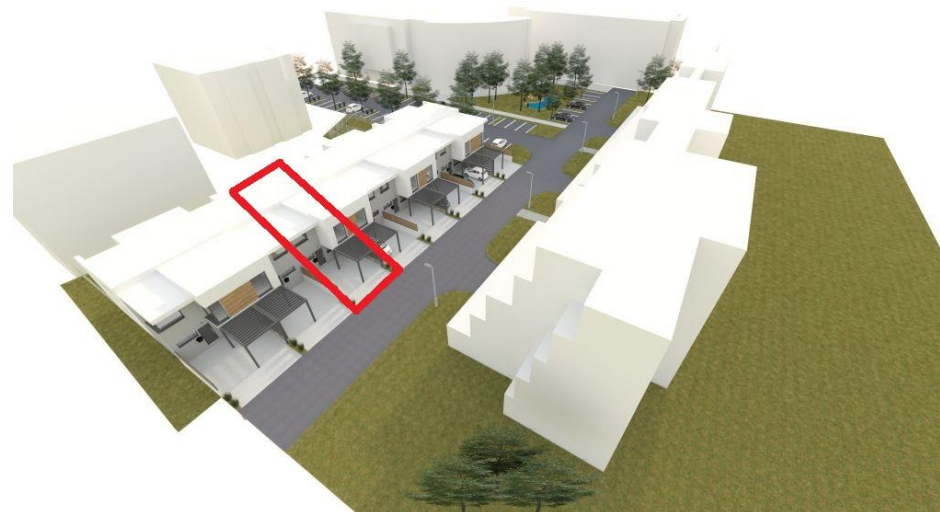
Pozemek 140,39 m²



NP-1



NP-2



Realitní tým
Ing. Michala
Stehlíka