

D2



KYJOUSKÉ
ZAHRADY

NP 1

11 hala	3,57 m ²
12 pracovna	5,37 m ²
13 ob. pokoj	33,29 m ²
14 kuchyně	4,51 m ²
15 schodiště	4,77 m ²
16 WC	2,08 m ²
17 sklad	4,40 m ²

NP 2

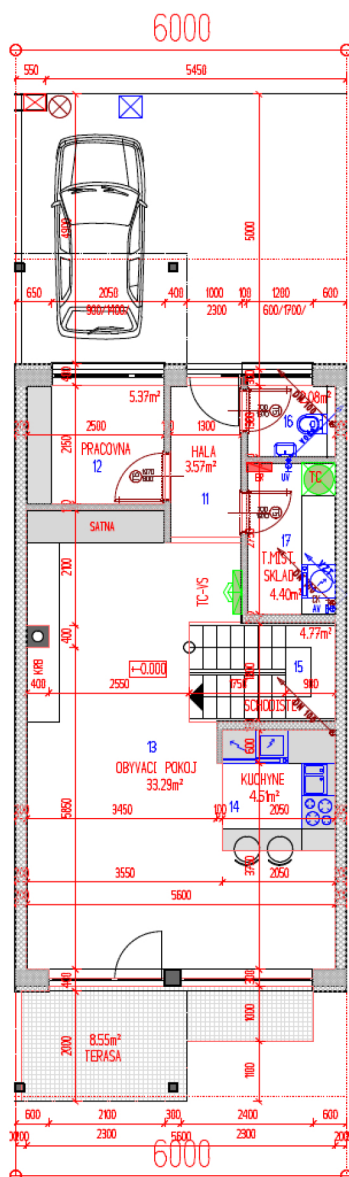
21 chodba	5,26 m ²
22 koupelna	11,68 m ²
23 pokoj	14,23 m ²
24 šatna	4,06 m ²
25 pokoj	14,76 m ²
26 ložnice	12,52 m ²

Podlahová pl. 120,50 m²

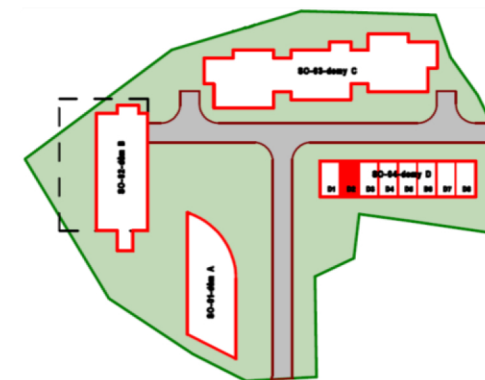
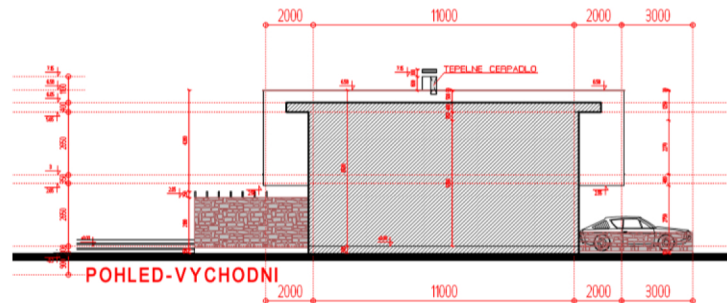
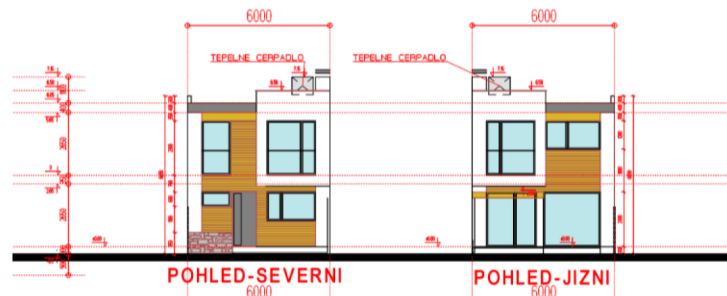
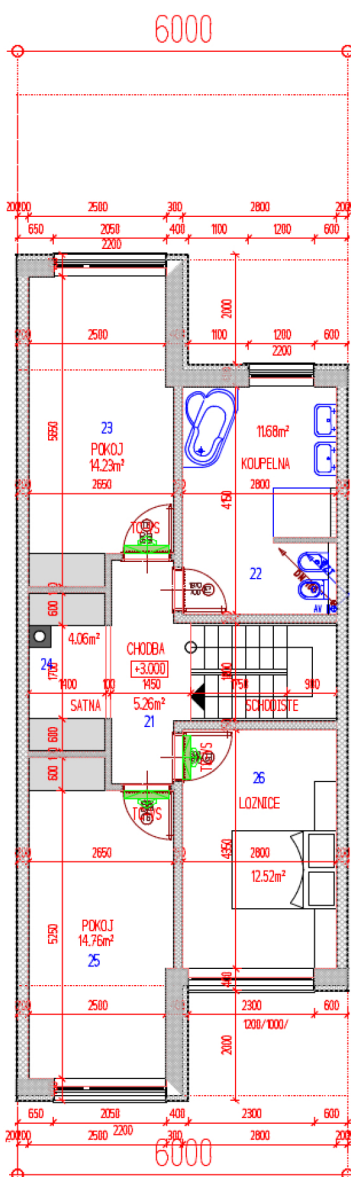
Terasa 8,55 m²

Pozemek 206 m²

1. NP



2. NP



Realitní tým
Ing. Michala
Stehlíka